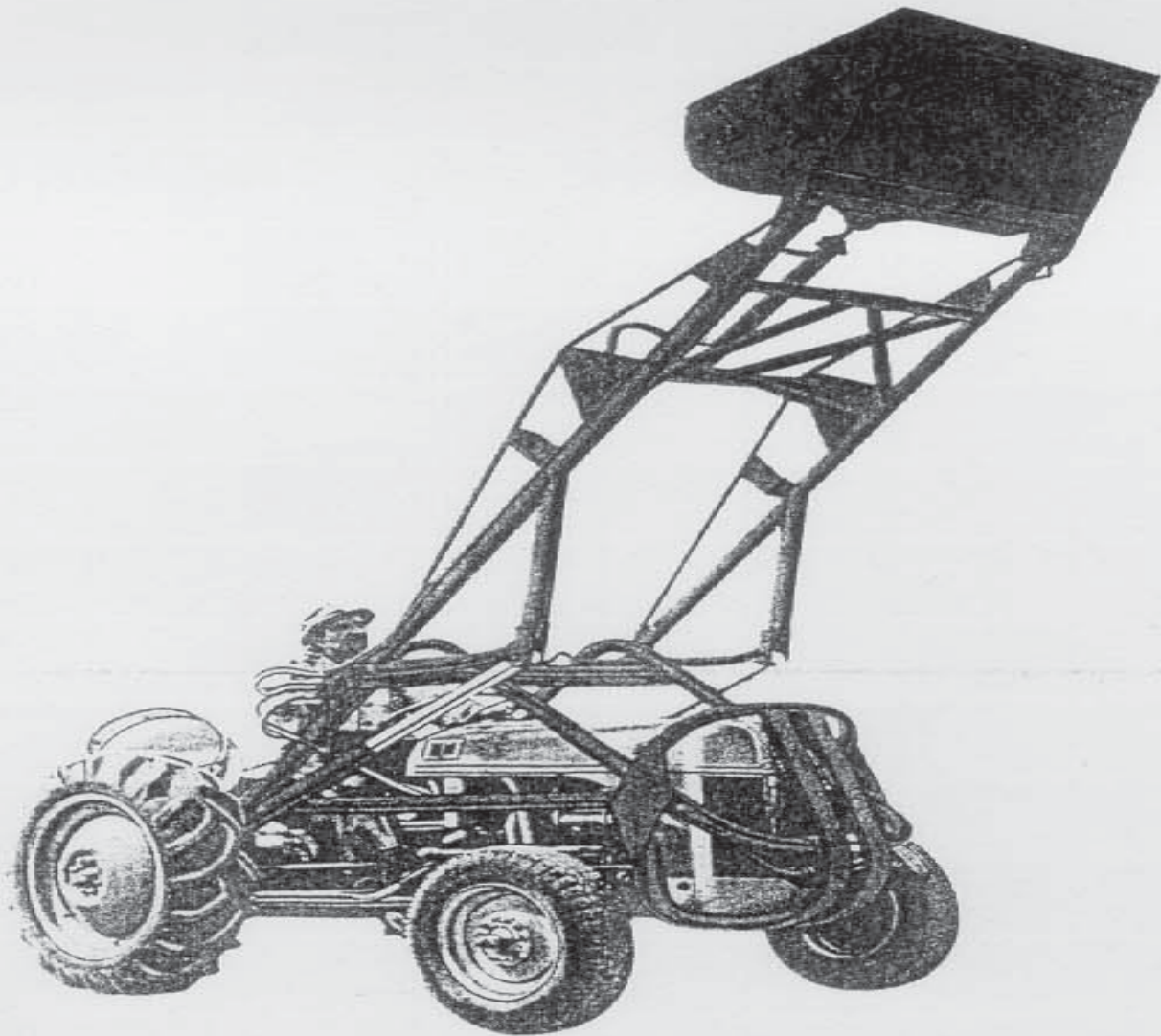


# Service Bulletins and Parts Lists For

WMI

WM2

WM3



# Wagner

## Hydraulic Tractor Loaders

Especially Designed and  
Built for **FORD** Tractors

[www.ntractorclub.com](http://www.ntractorclub.com)

# **WAGNER TRACTOR LOADER SERVICE BULLETIN**

## **SUBJECT: Hydraulic Pump**

The hydraulic pump furnished with the Wagner Tractor Loader is a high pressure gear type. It is thoroughly tested, inspected, certified, and guaranteed to be free from defect when it leaves our plant. It is precision made and should require very little attention throughout its long life if clean, proper hydraulic oils are used.

It has been noted on pumps returned as defective that nearly all have been subjected to the abuse of either dirty or incorrect type of hydraulic oil. To correct this situation and to lengthen the life of the pump, we recommend the following:

1. Use Wagner Special Hydraulic Oil which is blended especially for use with our hydraulically operated loader and is approved by the manufacturer of the pump.
2. Drain oil from loader after 20 to 25 hours of operation.
3. Check and clean strainer assembly.
4. If possible, blow out oil reservoir using compressed air, inserting nozzle through oil filler.
5. Replace oil using either new oil or old oil carefully filtered to remove foreign materials.

After initial drain of oil, it should not be necessary to change oil oftener than 1,000 hours of operation. However, it is recommended that the strainer be checked periodically to prevent pump from being starved by clogged strainer. It is further pointed out that oil should be free of water and foreign materials as this causes emulsification and foaming conditions.

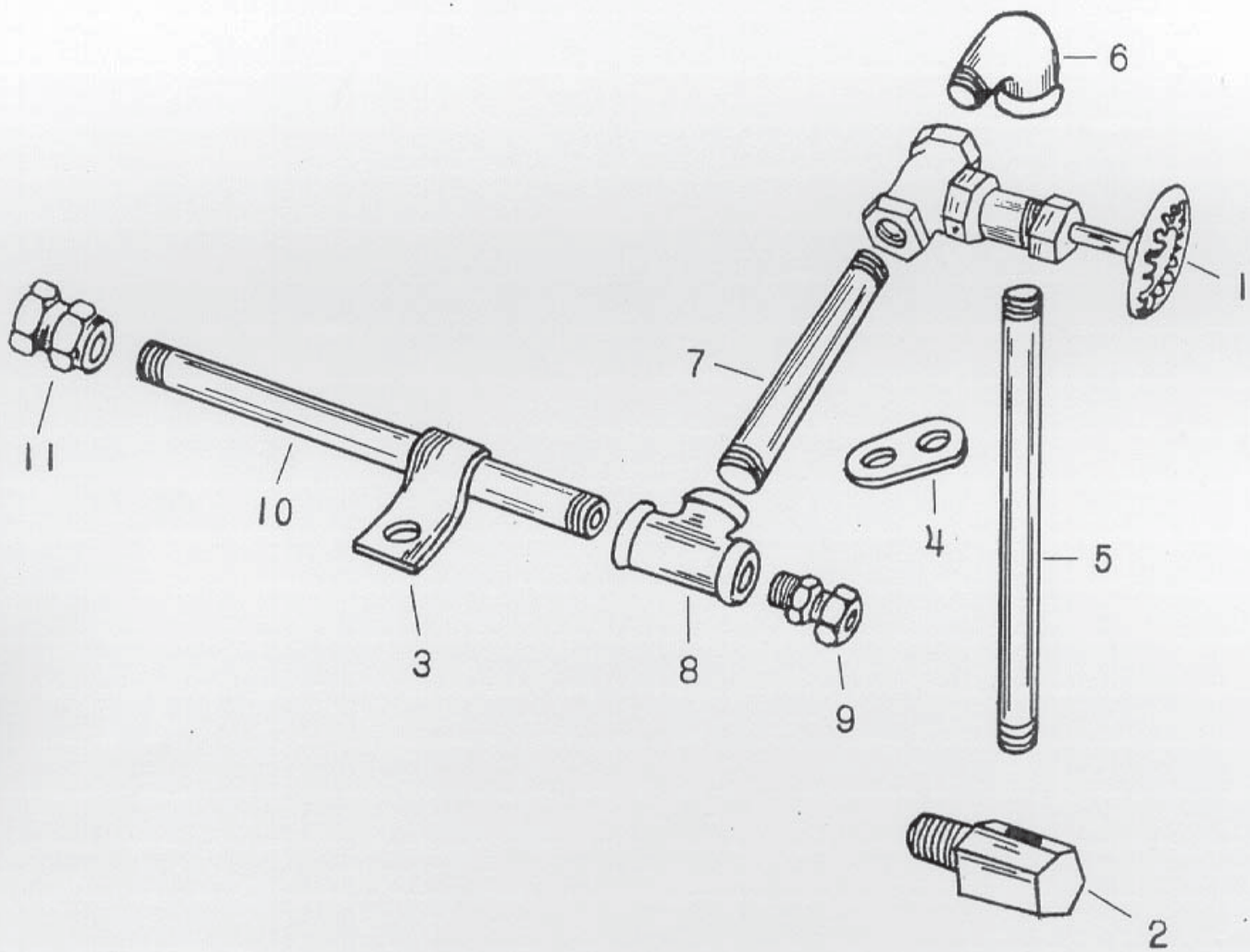
## **WAGNER IRON WORKS**

1905 South First Street

Milwaukee 1, Wisconsin

Mitchell 5-4730

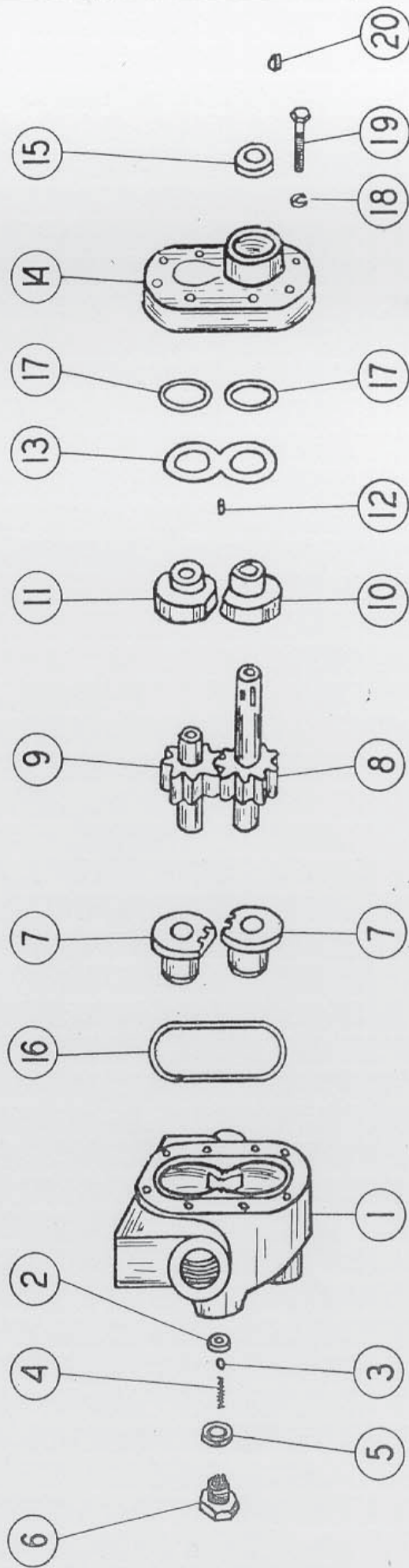




**Figure 12 – Hydraulic Connections – WMI only  
(Ford 8N, 9N, Ferguson TE)**

INDEX No.	PART No.	PART NAME
1	100-437	Shut Off Valve
2	100-438	Transmission Connection
3	100-439	Pipe Clamp
4	100-440	Pipe Holder
5	100-441	3/8" Pipe 18" Long to Transmission connection
6	100-442	3/8" Pipe Street Ell
7	100-443	3/8" Pipe 8" Long to Pipe Tee
8	100-229F	3/8" x 3/8" x 3/8" Pipe Tee
9	100-402	3/8" Female-Male Pipe Coupling
10	100-444	3/8" Pipe 9 1/2" Long to Pipe Tee
11	100-403	3/8" Female-Female Pipe Coupling

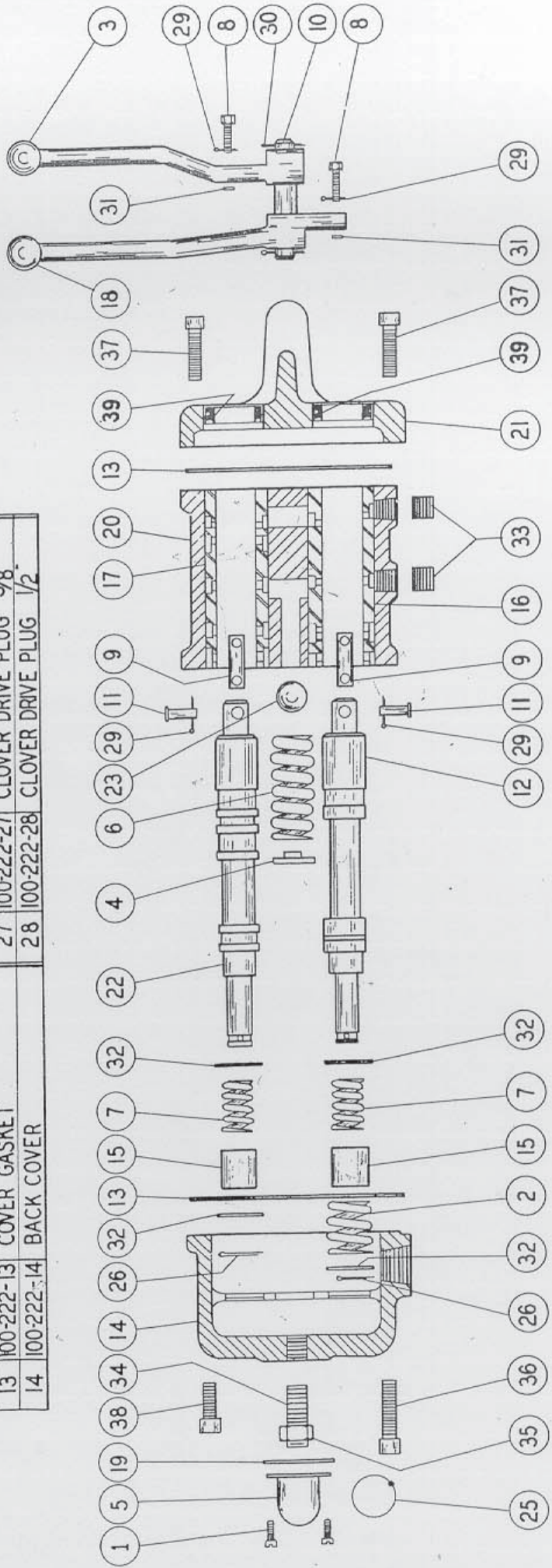
ITEM NO.	WAGNER NO.	PART NAME	ITEM NO.	WAGNER NO.	PART NAME
1	100-275B	BODY	11	100-275M	BEARING-COVER-DRIVEN GEAR
2	100-275C	SEAL	12	100-275N	PIN
3	100-275D	BALL	13	100-275O	SPRING
4	100-275E	SPRING	14	100-275P	COVER
5	100-275F	GASKET	15	100-275A	SEAL
6	100-275G	RETAINER	16	100-275R	SEAL RING-COVER
7	100-275H	BEARING - BODY	17	100-275S	SEAL RING- BEARING
8	100-275J	DRIVE GEAR	18	100-222C	LOCK WASHER
9	100-275K	DRIVEN GEAR	19	100-275T	CAP SCREW
10	100-275L	BEARING-COVER-DRIVE GEAR	20	100-277D	KEY - WOODRUFF



Hydraulic Pump  
100-275  
WM3 and WM2 Only



ITEM NO.	WAGNER NO.	PART NAME	ITEM NO.	WAGNER NO.	PART NAME	ITEM NO.	WAGNER NO.	PART NAME
1	100-222-1	SCREWS	15	100-222-15	STOP BUSHING	29	100-222-29	COTTER PIN 1/16" x 3/8"
2	100-222-2	SPRING	16	100-222-16	LOWER SLEEVE	30	100-222-30	COTTER PIN 3/32 x 3/4
3	100-222-3	R.H. LEVER	17	100-222-17	UPPER SLEEVE	31	100-222-31	WASHER 1/32" THICK
4	100-222-4	SPRING GUIDE	18	100-222-18	L.H. LEVER	32	100-222-32	WASHER 3/32" THICK
5	100-222-5	CAP	19	100-222-19	CORK GASKET	33	100-222-33	ALLEN HD. PIPE PLUG 1/4"
6	100-222-6	RELEASE VALVE SPRING	20	100-222-20	BODY	34	100-222-34	SLOTTED HD. SET SCREW
7	100-222-7	SPRING (PLUNGER)	21	100-222-21	FRONT COVER	35	100-222-35	HEX. HEAD NUT
8	100-222-8	LINK SCREW	22	100-222-22	UPPER PLUNGER	36	100-222-36	ALLEN HD. CAP SCREW
9	100-222-9	LINK	23	100-222-23	GRADE "A" BALL 9/16"	37	100-222-37	ALLEN HD. CAP SCREW
10	100-222-10	LEVER PIN	25	100-222-25	WIRE SEAL	38	100-222-38	ALLEN HD. CAP SCREW
11	100-222-11	LINK PIN	26	100-222-26	COTTER PIN 3/32 x 5/8"	39	100-222-39	VALVE SEAL ASSY. CONSISTS
12	100-222-12	LOWER PLUNGER	27	100-222-27	CLOVER DRIVE PLUG 3/8"			PART 100-222-40-41-42
13	100-222-13	COVER GASKET	28	100-222-28	CLOVER DRIVE PLUG 1/2"			
14	100-222-14	BACK COVER						



Double Acting Control Valve - WM3 only

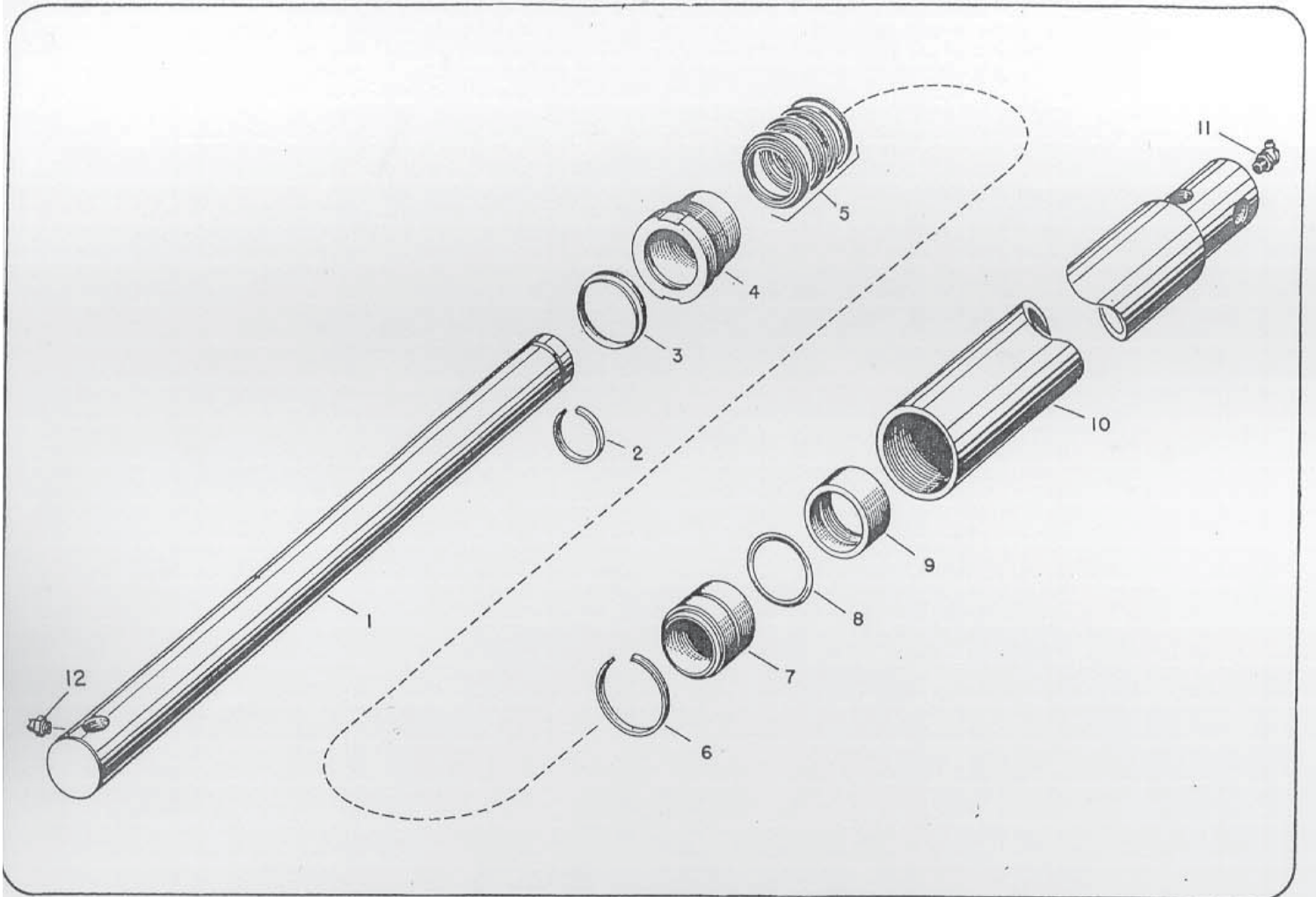


Figure 18—Hydraulic Single Acting Cylinder WM3, WM2, and WM1

### Hydraulic Cylinder—Figure 18

INDEX No.	PART No.	PART NAME
	100-257	Side Cylinder (Single Acting Ram)
1, 2 & 9	100-257B	Plunger Rod Assembly
1	100-257C	Plunger Rod
2	100-257K	Plunger Head Snap Ring
3	100-257H	Cylinder Wiper Ring
4	100-257G	Cylinder Gland Nut
5	100-257J	Cylinder Packing Set
6	100-257E	Cylinder Split Ring
7	100-257F	Cylinder Stop Ring
8	100-257I	Cylinder "O" Ring
9	100-257D	Plunger Rod Head
10	100-257A	Cylinder Tube Assembly
11	100-258	1/8" Pt. No. 1612 Zerk Fitting
12	100-249	1/8" Pt. No. 1610 Zerk Fitting
*	100-257L	Spanner Wrench (For Item 4)

\*Indicates parts not shown



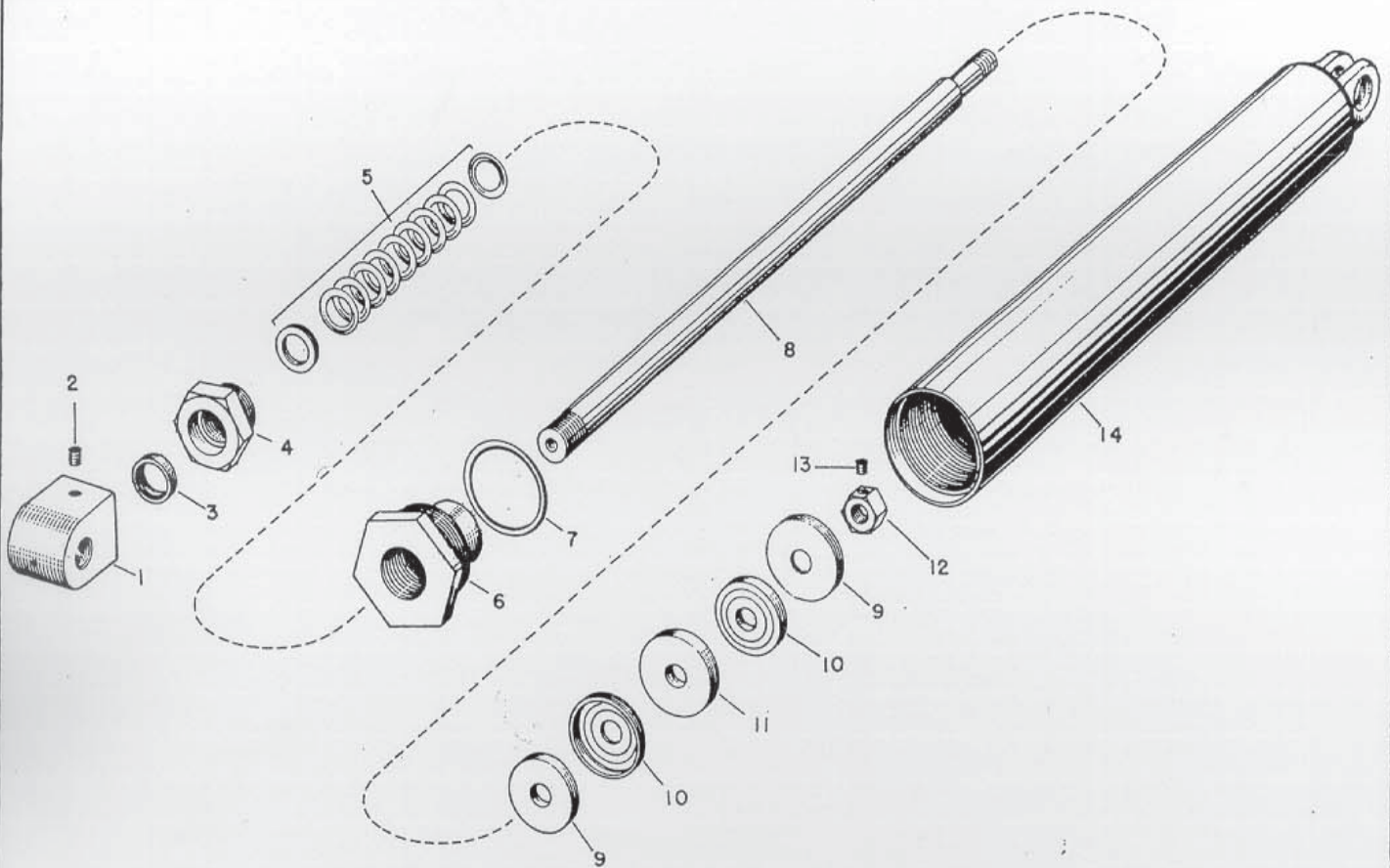


Figure 19 – Hydraulic Double Acting Cylinder with 1 1/4-inch Piston Rod – WM3 only

### Hydraulic Double-Acting Cylinder - Figure 19

INDEX No.	PART No. 1 1/4" RAM	PART NAME
	200-318A-1	Third Cylinder Double Acting Ram With 1 1/4" Piston Rod
1	200-318N	Piston Rod End
2	200-318K	3/8" Socket Hd. Set Screw
3	200-318MA	Oil Seal.—For 1 1/4" Piston Rod
4	200-318EA	Cylinder Gland Top Nut—For 1 1/4" Piston Rod
5	200-318JA	"V" Packing Set—For 1 1/4" Piston Rod
6	200-318FA	Cylinder Gland Nut—For 1 1/4" Piston Rod
7	200-318I	"O" Ring
8	200-318BA	Piston Rod—1 1/4"
9	200-318D	Piston Rod Cup Washer (Steel)
10	200-318H	Leather Cup Washer
11	200-318C	Piston Rod Follower
12	200-318G	Piston Rod Nut
13	200-318L	5/16" Socket Hd. Set Screw
14	200-318AA	Cylinder Tube Assembly



# INSTALLATION INSTRUCTIONS

## PREPARATION OF WAGNER WM3 TRACTOR LOADER BEFORE MOUNTING ON TRACTOR

1. Mount double acting control valve (Figure 1) to valve mounting bracket on right side of loader main frame.
2. Connect by-pass line to loader reservoir, which is a part of loader main frame and directly below valve.
3. Connect male end of  $\frac{3}{8}$  x 24" hose to top rear port of control valve. Connect other end to pipe line running to front of third cylinder.
4. Connect male end of  $\frac{3}{8}$  x 24" hose to top front port of control valve. Connect other end to pipe line running to rear of third cylinder.
5. Connect male end of  $\frac{3}{8}$  x 24" hose to center port of control valve. Connect other end to pump feed line pipe.
6. Connect male end of  $\frac{3}{8}$  x 20" hose to lower right port of control valve. Connect coupling end to equalizer pipe tee.

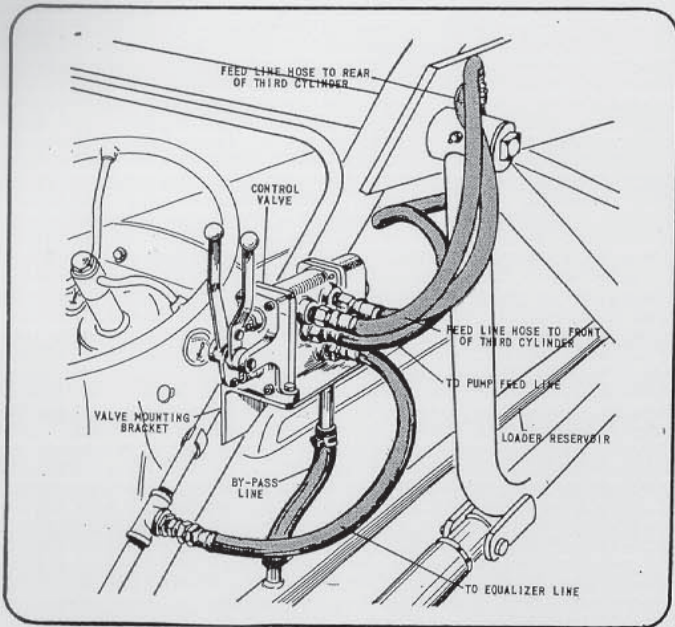


Figure 1 - Valve Installation - WM3 Only

## PREPARATION OF WAGNER WM2 TRACTOR LOADER BEFORE MOUNTING ON TRACTOR

1. Mount single acting control valve (Figure 2) to valve mounting bracket on right side of loader main frame.
2. Connect by-pass line to loader reservoir, which is a part of loader main frame and directly below valve.
3. Connect male end of  $\frac{3}{8}$  x 18" hose to topside port of control valve. Connect coupling end to pump feed line.
4. Connect male end of  $\frac{3}{8}$  x 18" hose to side port of control valve. Connect coupling end to equalizer pipe tee.
5. Mount control valve lever to lever's valve link. Mount control valve knob to control valve lever.

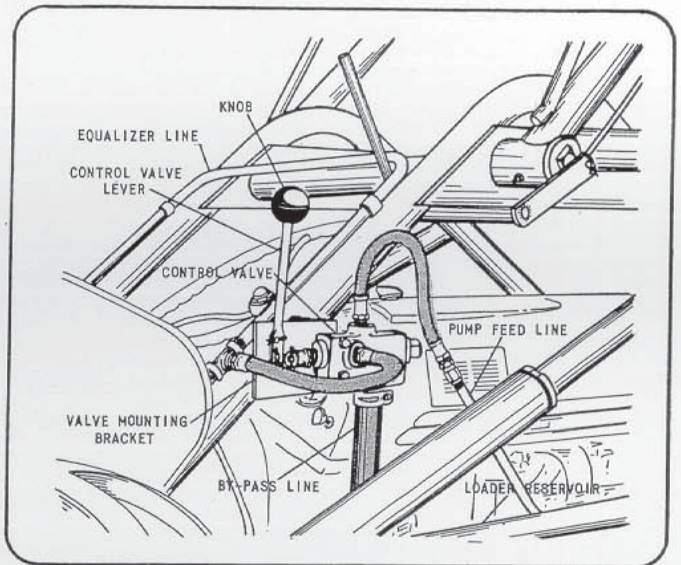


Figure 2 - Valve Installation - WM2 Only

## PREPARATION OF TRACTOR HYDRAULIC SYSTEM FOR MOUNTING WAGNER WM1 TRACTOR LOADER

1. Loosen tractor muffler in rear to permit the insertion of transmission connector, replacing present plug in tractor transmission, lower right hand side.
2. Insert connector in tractor transmission. Connect  $\frac{3}{8}$ " pipe 18" long to connector. Secure pipe to top of tractor transmission with pipe holder (Figure 3).
3. Connect pipe street ell to pipe. Connect shut off valve to street ell, then attach  $\frac{3}{8}$  pipe 8" long to shut off valve; assemble other end to center outlet of pipe tee.
4. Connect female-male adaptor union to one end of pipe tee and  $\frac{3}{8}$ " pipe 9 $\frac{1}{2}$ " long to other.
5. Secure 9 $\frac{1}{2}$ " long pipe with clamp furnished and connect female-female pipe coupling to other end of pipe.
6. Hoses from single acting cylinders connect to pipe couplings after loader is attached.

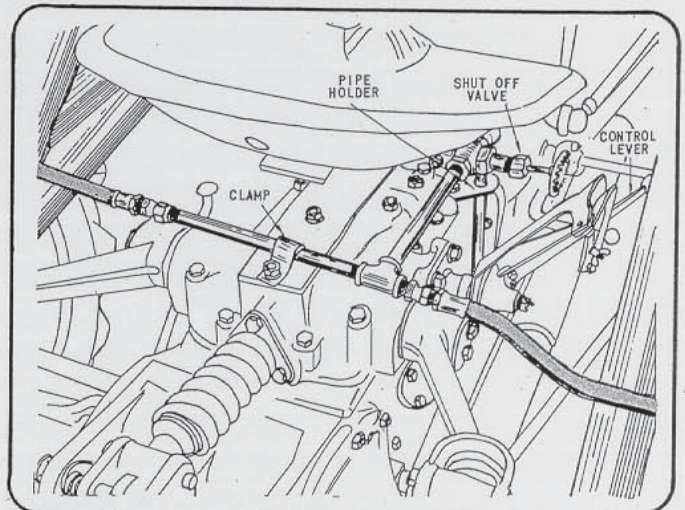


Figure 3 - Tractor Hydraulic System Mounting WM1 Only (Ford 8N, 9N, Ferguson TE)



## PREPARATION OF TRACTOR FOR WAGNER LOADERS WM3, WM2 and WM1

Steps 1, 2 and 3 are for Ferguson tractors only

1. Secure grill brace underneath hood, on lower edge of gas tank. Drill two 5/16" holes to allow rods to protrude through side of grill. Use nuts furnished as jam nuts. (One on both sides of grill.)
2. Mount hood clamps furnished with loader, one on each side of hood.
3. Remove bolts holding hood and grill together, making top section removable, remove hood and grill.
4. Remove Ford grill by removing bolts holding grill to tractor.
5. Remove both fenders and secure to upper flange on rear mounting plate of loader (Figure 5).
6. Place jack under crankcase and raise front wheels until free.
7. Remove pins attaching right and left radius rods to front axle, and free forwarding end of radius rods from axle (Figure 4).
8. Remove cap screw holding tractor front axle pin to front axle support assembly.
9. Remove bolts (Figure 6) which secure front axle support assembly to tractor so radiator can be raised.
10. Remove bolts from crankcase to free front axle support assembly.
11. Remove axle pin.

Steps 12, 13 and 14 are for WM3 and WM2 models only.

12. Remove fan belt from crankshaft pulley.
13. Remove crank nut from end of crankshaft.
14. Remove crankshaft pulley.

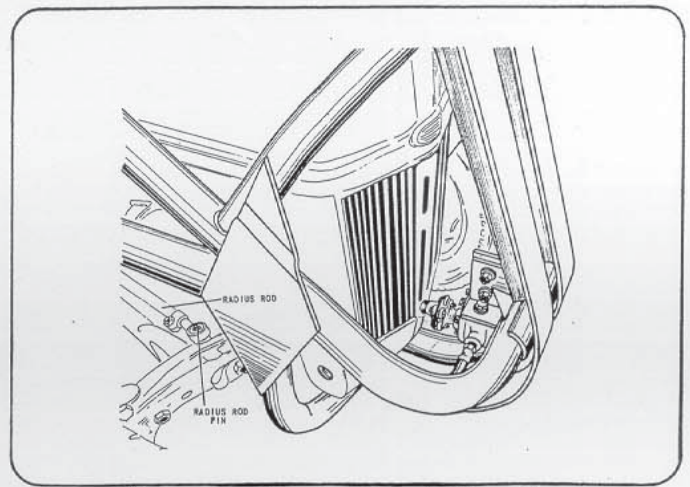
## INSTALLATION OF LOADERS WM3, WM2 and WM1 ON TRACTORS

Steps 1, 2, 3 and 13 are for WM3 and WM2 models only

1. Install special pulley on crankshaft and secure with capscrew, lockwasher and plain washer.
2. Mount hub and pin assembly to crankshaft pulley by inserting pins in rubber inserts on pulley. (Driveshaft is secured into hub and pin assembly after radiator shell is replaced.)
3. Replace fan belt on new pulley.

The following Step is for Ford Models 9N, 2N and Ford-Ferguson Tractors:

4. Install front hanger plate to front of axle housing assembly and secure with capscrew (Figure 6).

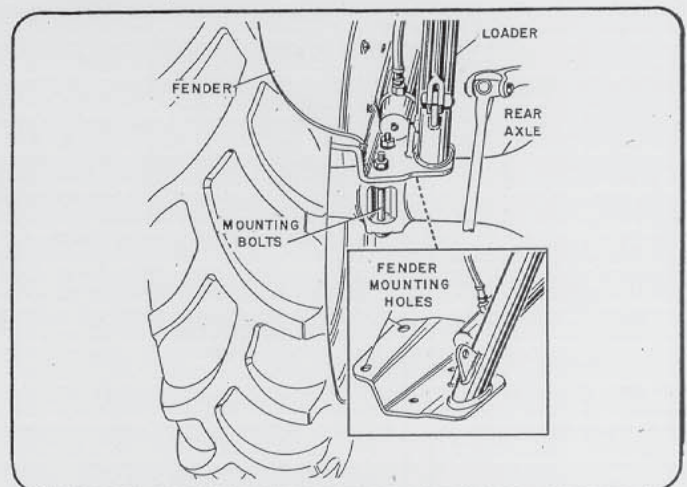


**Figure 4 – Tractor, Front Mounting  
WM3, WM2, and WM1**

Be sure the heavy washer is in front of the axle and three flat washers are in back of it.

Steps 5, 6, 7 and 8 are for Ford Model 8N and New Style Ferguson Tractor

5. Enlarge the hole in the front axle pin to 7/8" or 1" to allow driveshaft of loader to go through. Anneal hole if necessary.
6. Secure front hanger plate against front axle support and over the axle pin with bolt furnished (Figure 7).
7. Align holes in front hanger plate wing with side holes in front axle support for the hood panel bolts.
8. Drill two additional holes for attaching front hanger plate to axle housing assembly.
9. Bolt front axle support assembly to radiator.
10. Replace radiator grill on Ford, or grill and hood on Ferguson tractor.
11. Connect both radius rods to front axle (Figure 4).
12. Remove jack from under tractor.
13. Insert pump driveshaft and screw into hub and pin assembly. Note: Driveshaft has left hand thread.



**Figure 5 – Tractor, Rear Mounting  
WM3, WM2, and WM1**



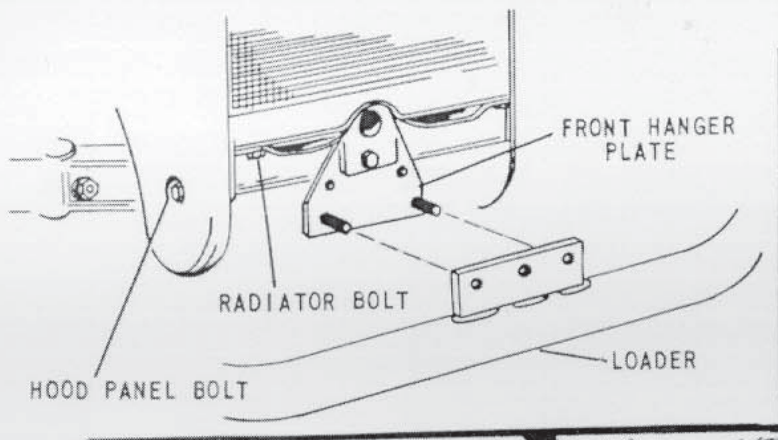


Figure 6 Loader Installation For Ford Models 9N, 2N and Ford-Ferguson Tractors

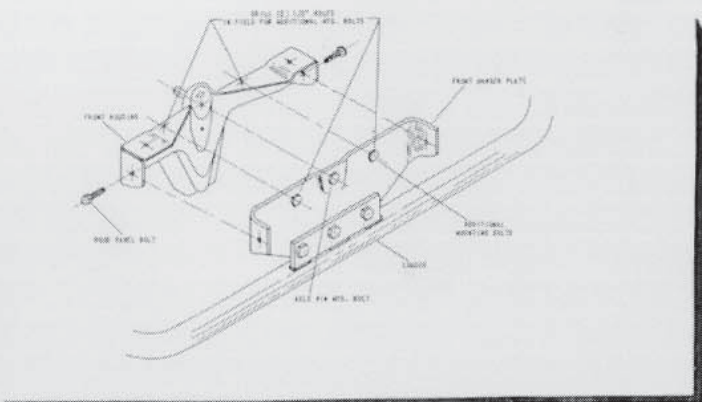


Figure 7 Loader Installation For Ford Model 8N and New Style Ferguson Tractors



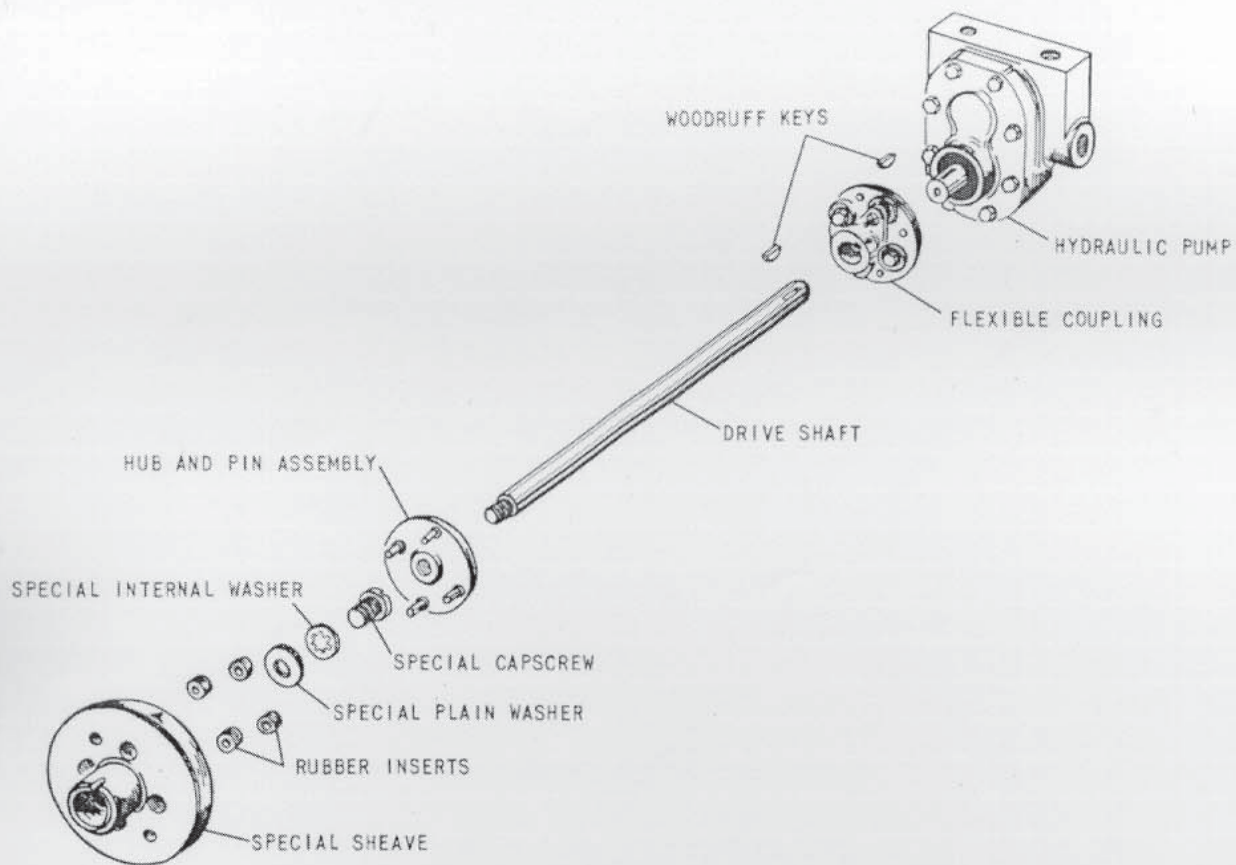


Figure 8—Drive Assembly WM3 and WM2 Only

## INSTALLATION OF WAGNER LOADERS ON TRACTOR

Steps 1, 7, 8 and 9 are for WM3 and WM2 Models only.

- Loosen bolts holding pump on loader. This will permit alignment when pump is connected to driveshaft (Figure 8).
- Raise loader by means of hoist, or block and tackle, to height approximating position when on the tractor.
- Roll tractor carefully into loader frame. Tilt the loader sideways so rear mounting shoes can be positioned on rear axle.
- Position loader frame by lining up holes in front hanger plate to respective bracket on loader main frame. Bolt loosely (Figures 6 and 7).
- Bolt frame to rear axle housing (Figure 5).
- Bolt loader front mounting bracket to hanger plate—Step 4. Tighten all bolts on loader and tractor mounting brackets.
- Insert driveshaft through crank opening in grill and screw into hub and pin assembly. Note: Driveshaft has left-hand thread.
- Connect driveshaft to pump with flexible coupling, making sure the woodruff key is in place on the shaft. Then tighten the set screws.
- Align the pump and tighten the bolts to secure pump to loader. Pump and driveshaft must be in perfect alignment. Check this.
- Depress dipperstick so that cylinders are completely closed, then fill loader with  $4\frac{1}{2}$  gallons of SPECIAL WAGNER HYDRAULIC FLUID. (Oil cap is located on reservoir frame, just ahead of the loader pivot cross member on right side.) Test operation of control valve, dipperstick and third cylinder. If operation is not smooth, adjust gland nuts on both cylinders.
- Loader is now ready for operation with the various attachments. Individual attachments are secured to the dipperstick by two tempered pins so they can be changed quickly and easily.

## LOADER LUBRICATION

There are six grease fittings on the Wagner WM3 loader and seven on both the WM2 and WM1 loaders. Lubricating points are the same on all three loader models with the exception of the fitting located on the bucket lock pin sleeve of the WM2 and WM1. All loaders have a fitting at each hydraulic lift point (100-257); at the loader pivot bearing, at the rear end of each hydraulic lift arm (100-257) just above the rear axle, and at either side of trunnion pivot.

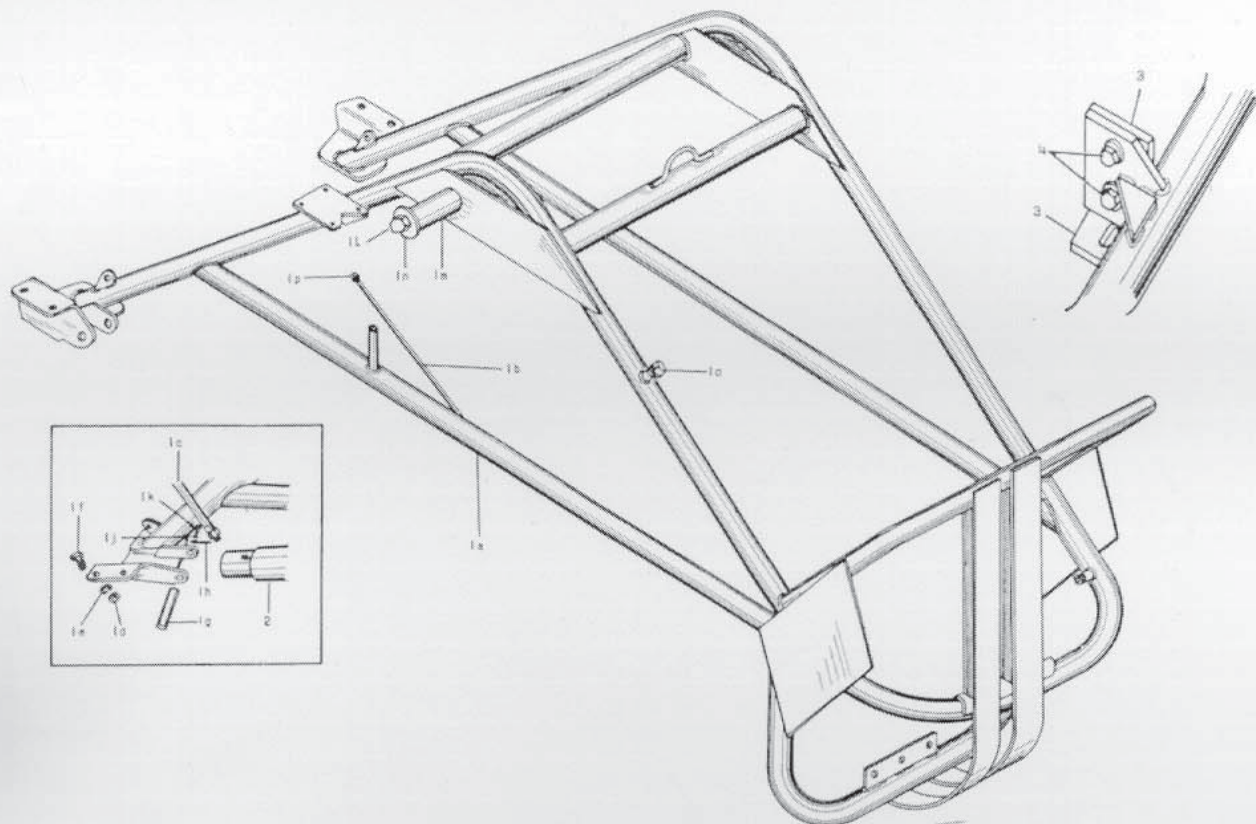


Figure 9 — Main Frame Assembly WM3, WM2 and WM1

**Main Frame Assembly WM3, WM2 and WM1 (Fig. 9)**

INDEX No.	PART No.	PART NAME
1	100-200FM	Main Frame Assembly—Complete—Consisting of the following:
*(1a)	100-200-2	Main Frame—Welded—Specify WM3, WM2 or WM1
**	100-239A	Equalizer Line—5'-10" long
**	100-240F	Equalizer Nipple—9½" long
*(1b)	100-243B	Pump Feed Line—4'-8" long—WM3 Only
*(1b)	100-243C	Pump Feed Line—4'-2½" long—WM2 Only
*(1c)	100-227	⅜" x 18" Hose Assembly with Female-Female Adaptor Union
*(1d)	100-217	⅝" Hex. Nut
*(1e)	100-216A	⅝" Lockwasher
*(1f)	100-213	⅝" Hex. Head Cap Screw 1½" long
*(1g)	100-259	Cylinder Mounting Pin
*(1h)	100-260	5/16" Cotter Pin 2" long
*(1j)	100-222C	5/16" Lockwasher
*(1k)	100-260A	5/16" Hex. Head Cap Screw ¾" long
**	100-229F	⅜" Pipe Tee
*(1L)	100-303	1" Mach. Bolt 10" long
**	100-303A	1" Lockwasher
*(1m)	100-303B	Pivot Tubing
*(1n)	100-303C	Pivot Washer
**	100-303D	1" Slotted Hex. Nut
**	2014-29	3/16" Cotter Pin 2" long
*(1o)	100-251	¾" Pipe Cap
*(1p)	200-327	⅜" Pipe Cap
2	100-257	Cylinder Single Acting—See Form 344
The following are WM3 and WM2 Only		
3	100-244	Pump Mounting Bracket Assembly
4	100-269	½" Hex. Head Cap Screw 1¾" long
**	100-273A	½" Plain Washer
**	100-270A	½" Lockwasher
**	100-270	½" Hex. Nut

\*\*Indicates Part Not Shown

\*Also Serviced Individually



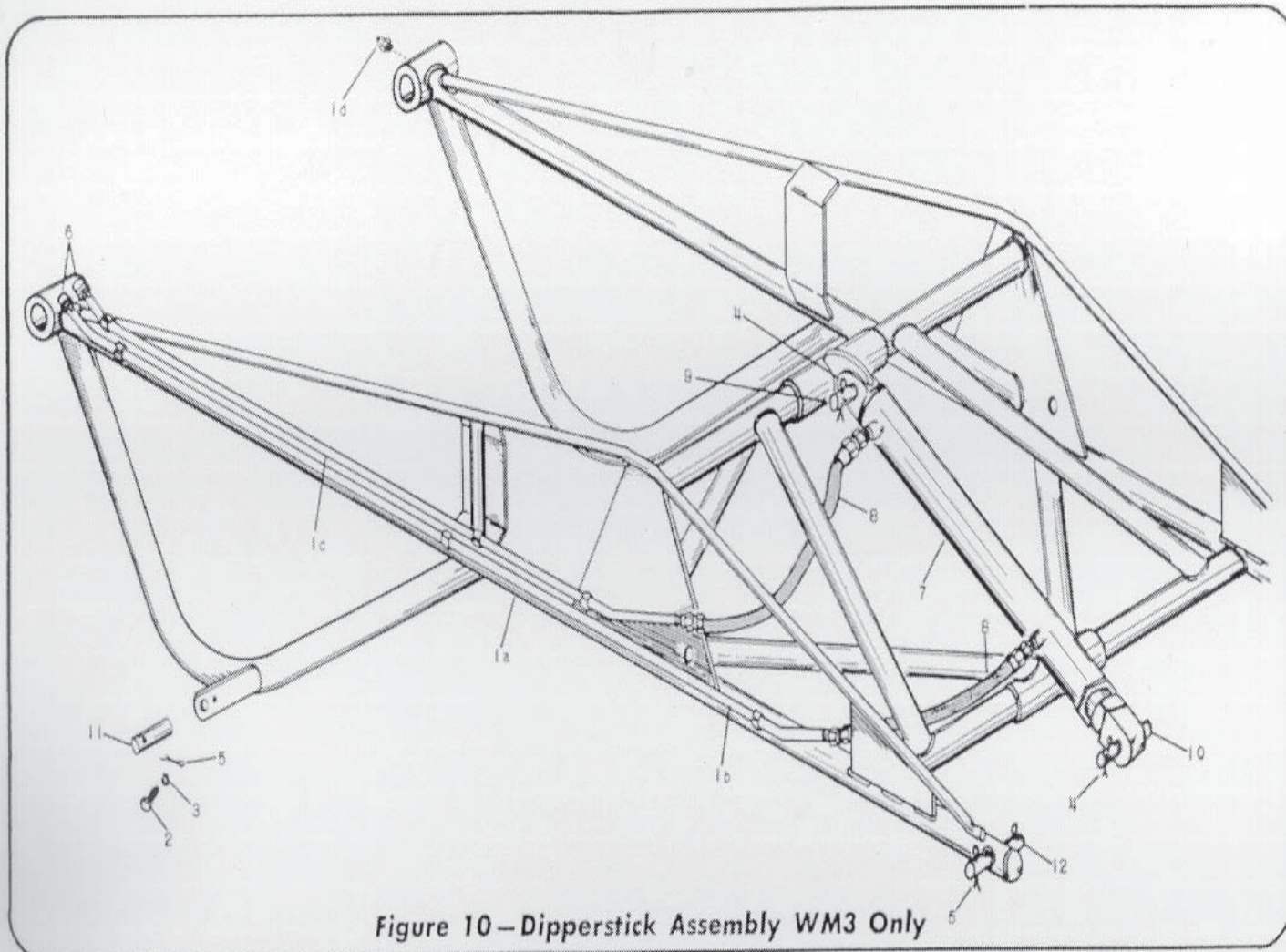


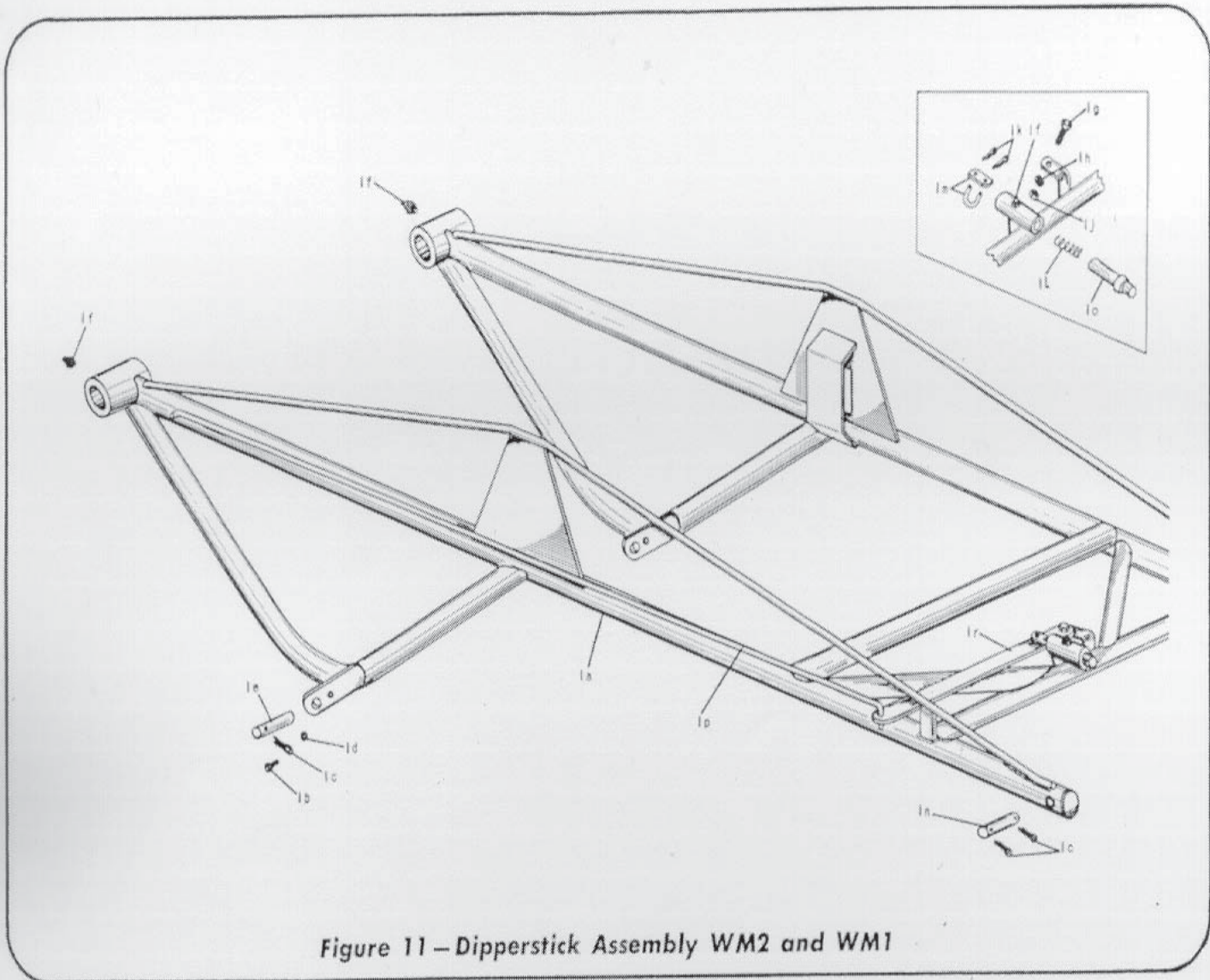
Figure 10—Dipperstick Assembly WM3 Only

### Dipperstick Assembly WM3 Only (Fig. 10)

INDEX No.	PART No.	PART NAME
1	200-300FM	Dipperstick Assembly—Complete Lifting Arm, consisting of:
* (1a)	200-300-2	Welded Frame
* (1b)	200-320	Pipe line to third cylinder 6'-5½" long
* (1c)	200-321A	Pipe line to third cylinder 5'-2" long
* (1d)	100-249	Zerk Fitting No. 1610
2	100-260A	5/16" Hex. Head Cap Screw ¾" long
3	100-222C	5/16" Lockwasher
4	200-317A	3/16" Cotter Pin 1½" long
5	100-260	5/16" Cotter Pin 2" long
6	200-327	⅜" Pipe Cap
7	200-318A-1	Cylinder—See Form 345 for Service
8	200-319	⅜"x24" long Hose Assembly with Female-Female Adaptor Union
9	200-317	Cylinder Mounting Pin
10	200-326	Implement Mounting Pin
11	100-259	Side Cylinder Mounting Pin
12	200-324	Implement Mounting Pin

\*Also Serviced Individually





**Dipperstick Assembly WM2 and WM1 (Fig. 11)**

INDEX No.	PART No.	PART NAME
1	200-300FMW2	Dipperstick Assembly—Complete Lifting Arm, Consisting of:
*(1a)	200-300-3	Welded Frame
*(1b)	100-260A	5/16" Hex. Head Cap Screw 3/4" long
*(1c)	100-260	5/16" Cotter Pin 2" long
*(1d)	100-222C	5/16" Lockwasher
*(1e)	100-259	Cylinder Mounting Pin
*(1f)	100-249	Zerk Fitting No. 1610
*(1g)	100-269	1/2" Hex. Head Cap Screw 1 3/4" long
*(1h)	100-270A	1/2" Lockwasher
*(1j)	100-270	1/2" Hex. Nut
*(1k)	2000A-8	1/8" Cotter Pin 1" long
*(1L)	100-435	Spring—Latch Pin
*(1m)	100-433	Chain Link Assembly
*(1n)	200-324FW2	Implement Mounting Pin
*(1o)	100-436	Latch Pin (Welded Assem.)
*(1p)	100-431	Latch Rod—Release
*(1r)	100-432	Latch Control Bar

\*Also Serviced Individually



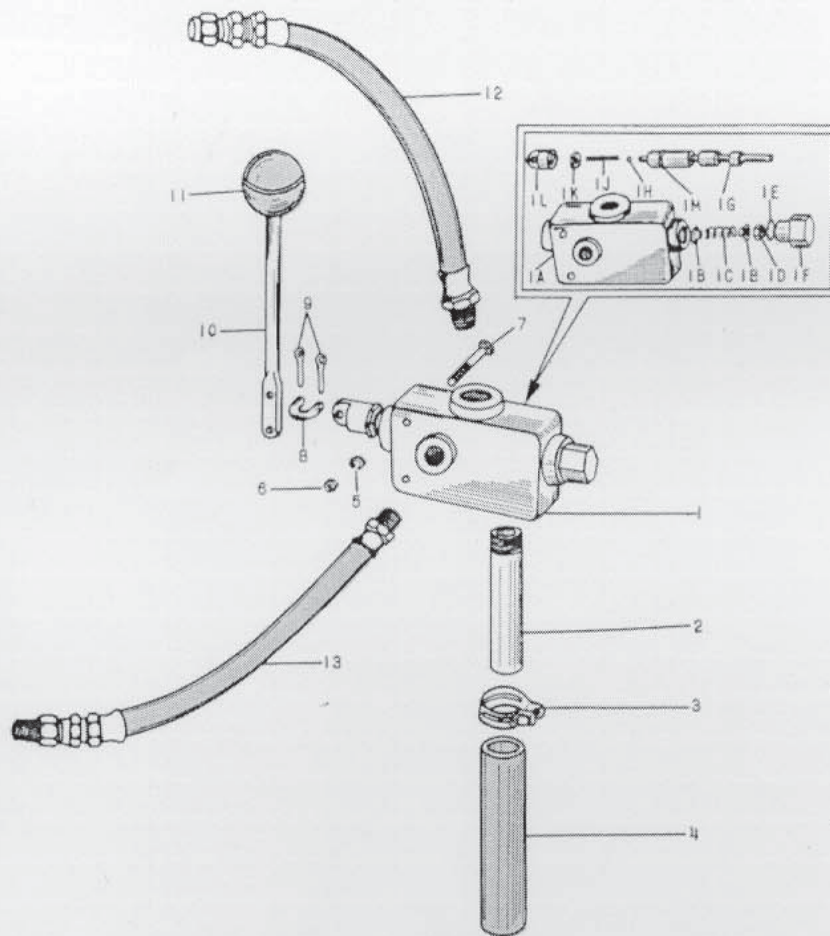


Figure 13—Control Valve and Lines WM2 Only

Control Valve and Lines WM2 Only (Fig. 13)

INDEX No.	PART No.	PART NAME
1	100-420	Control Valve
1A	100-420A	Valve Housing
1B	100-420B	Spring Retainer
1C	100-420C	Spring
1D	100-420D	Elastic Nut— $\frac{3}{8}$ "
1E	100-420E	Valve Cap Gasket
1F	100-420F	Valve Cap
1G	100-420G	Valve Piston
1H	100-420H	$\frac{5}{16}$ " Dia. Ball
1J	100-420J	Relief Valve Spring
1K	100-420K	Lock Nut
1L	100-420L	Yoke
1M	100-420M	Rubber Sealing Ring
2	100-250	Pipe Nipple $1\frac{3}{4}$ " long
3	100-238	Hose Clamp
4	100-284LR	Neoprene Hose 9" long
5	100-222C	$\frac{5}{16}$ " Lockwasher
6	100-222D	$\frac{5}{16}$ " Hex Nut
7	100-426	$\frac{5}{16}$ " Hex Head Cap Screw $2\frac{1}{2}$ " long
8	100-423	Lever and Valve Link
9	100-434	$\frac{1}{8}$ " Cotter Pin $\frac{1}{2}$ " long
10	100-424A	Control Valve Lever
11	100-424B	Control Lever Knob
12	100-413	$\frac{3}{8}$ " x 18" Hose Assembly with a $\frac{1}{2}$ " Male End and a $\frac{3}{8}$ " Female-Female Pipe Coupling
13	100-452	$\frac{3}{8}$ " x 18" Hose Assembly with a $\frac{1}{2}$ " Male End and a $\frac{3}{8}$ " Female-Male Pipe Coupling

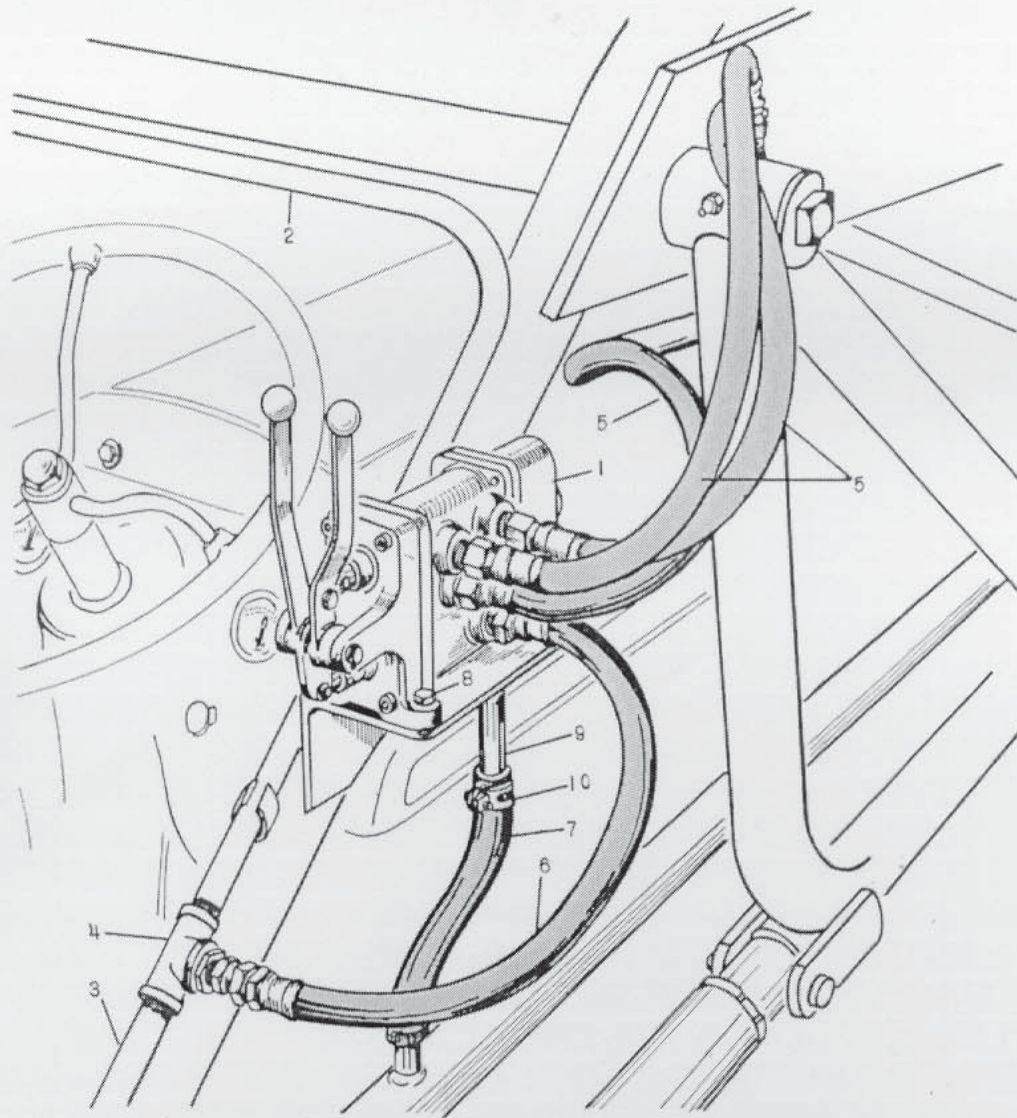


Figure 14 – Control Valve and Lines – WM3 Only

Control Valve and Lines – WM3 Only (Fig. 14)

INDEX No.	PART No.	PART NAME
1	100-222	Double Acting Control Valve—See Form 315
2	100-239A	Equalizer Line 5'-10" long
3	100-240F	Equalizer Nipple 9½" long
4	100-229F	⅜" Pipe Tee
5	200-319	⅜" x 24" Hose Assembly With a Female-Female Pipe Coupling
6	100-227-I	⅜" x 20" Hose Assembly with a Female-Male Pipe Coupling
7	100-284A	1" Black Neoprene Hose 11" long
8	100-222B	5/16" Hex. Head Cap Screw 1" long
*	100-260A	5/16" Hex. Head Cap Screw ¾" long
*	100-222D	5/16" Hex. Nut
9	100-233FW2	¾" By-Pass Nipple 5¼" long
10	100-238	Hose Clamps

\*Indicates Parts Not Shown



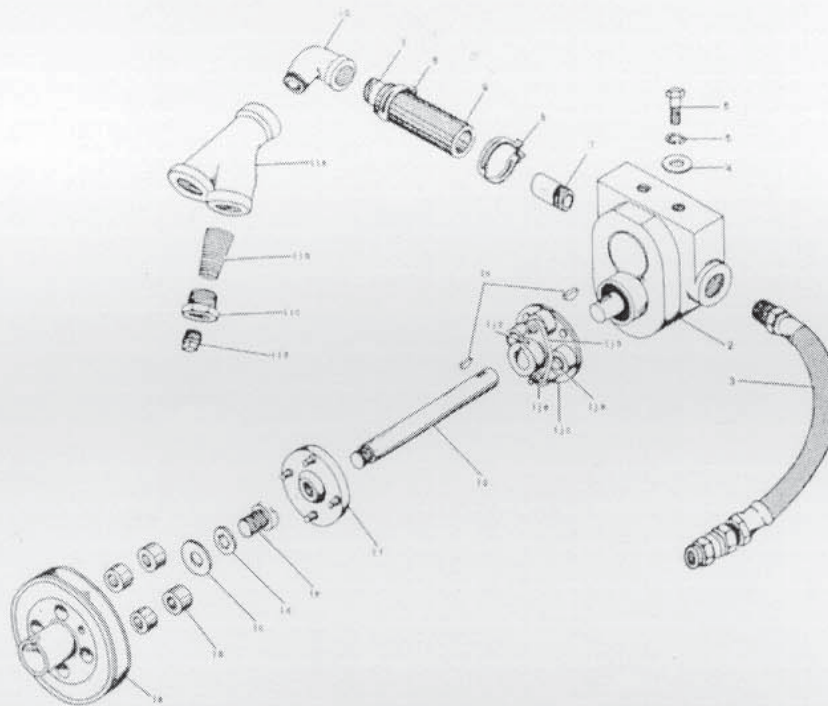


Figure 15—Drive Assembly WM3 and WM2 Only

Drive Assembly WM3 and WM2 Only (Fig. 15)

INDEX No.	PART No.	PART NAME
1	60242	Ferguson Drive Assembly—TEA-20, Complete, Consisting of:
1	60244	Ford Drive Assembly—Complete, Consisting of:
1	60245	Ferguson Drive Assembly—Complete, Consisting of:
*(1a)	100-281F	Sheave—Ford Only
*(1a)	100-299	Sheave—Ferguson TO and TE Models
*(1a)	100-299A	Sheave—Ferguson TEA-20 Model
*(1b)	100-281FR	Rubber Inserts
*(1c)	100-281FB	Special Flat Washer
*(1d)	100-281FC	Special Lockwasher
*(1e)	100-281FA	Special Capscrew
*(1f)	100-280WC	Hub and Pin Assembly (4 Pin)
*(1g)	100-278A	Driveshaft 10.500 Ferguson TEA-20
*(1g)	100-278D	Driveshaft 13.0625—Ford Only
*(1g)	100-278F	Driveshaft 14.0625—Ferguson Only
*(1h)	100-277D	Woodruff Key
*(1j)	100-277	Flexible Drive Coupling
*(1ja)	100-277E	1/4" Hex. Head Bolt 1 1/4" long
*(1jb)	100-277B	Flange
*(1jc)	100-277C	Center Assembly
*(1jd)	100-277G	1/4" Socket Head Set Screw 1/4" long
*(1je)	100-277F	1/4" Hex. Lock Nut
**	100-277A	Allen Head Wrench
2	100-275	Hydraulic Pump—See Form 314
3	100-413	3/8" x 18" Long Hose Assembly with a 1/2" Male End and a 3/8" Female-Female Pipe Coupling
4	100-273A	1/2" Plain Washer
5	100-270A	1/2" Lockwasher
6	100-273	1/2" Hex. Head Cap Screw 1 1/4" long
7	100-250	3/4" Pipe Nipple 1 3/4" long
8	100-238	Hose Clamps
9	100-284B	Black Neoprene Hose 8 1/2" long
10	100-282	3/4" Pipe Street Ell
11	100-283	Strainer Assembly
11a	100-283B	"Y" Fitting Strainer
11b	100-283A	Strainer Screen
11c	100-283C	Reducer Bushing
11d	100-222A	1/2" Pipe Plug

\*\*Indicates Parts Not Shown

\*Also Serviced Individually

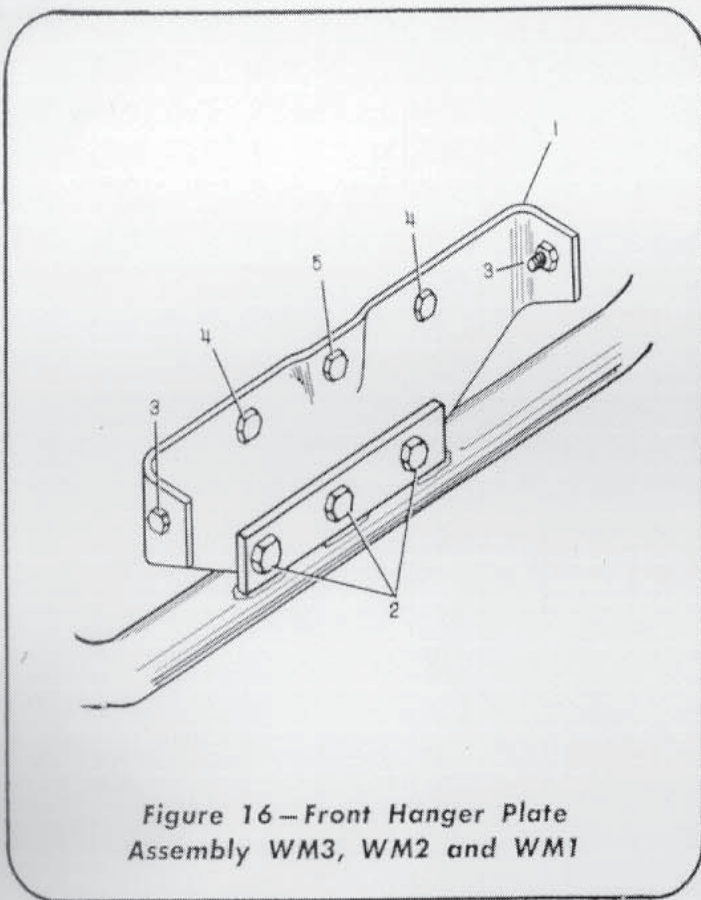


Figure 16—Front Hanger Plate Assembly WM3, WM2 and WM1

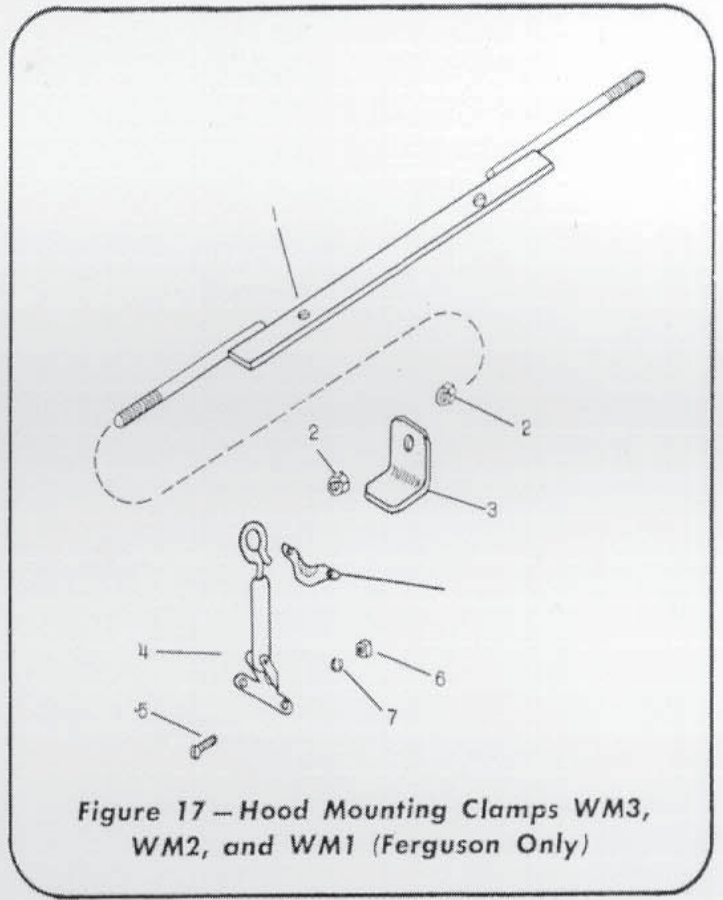


Figure 17—Hood Mounting Clamps WM3, WM2, and WM1 (Ferguson Only)

**Front Hanger Plate Assembly WM3, WM2, and WM1 (Fig. 16)**

INDEX No.	PART No.	PART NAME
1	100-450F	Front Hanger Plate—Ford Only (Model 8N)
1	100-450FE	Front Hanger Plate—Ferguson Only (New Style)
2	100-213	3/8" Hex. Head Cap Screw 1 1/2" Long
*	100-216A	3/8" Lockwasher
*	100-217	3/8" Hex. Nut
3	100-295B	7/16" N. F. Hex. Head Cap Screw 1 1/4" Long
*	100-430B	7/16" Lockwasher
*	100-295D	7/16" Plain Washer
*	100-430C	7/16" N. F. Hex. Nut

INDEX No.	PART No.	PART NAME
4	100-295A	1/2" N.F. Hex. Head Cap Screw 1 1/4" Long
*	100-270A	1/2" Lockwasher
*	100-295C	1/2" NF Hex. Nut
5	100-295	1/2" NF Hex. Head Cap Screw 1 1/2" Long—Ford Only
*	100-270A	1/2" Lockwasher—Ford Only
5	100-295E	7/16" NF Hex. Head Cap Screw 1 1/2" Long—Ferguson Only
*	100-430B	7/16" Lockwasher—Ferguson Only
*	100-292A	Old Style Hanger Plate—Ferguson
*	100-292B	Front Hanger Plate—2N Model Tractors

\*Indicates Parts Not Shown

**Hood Mounting Clamps WM3, WM2 and WM1 (Ferguson Only) (Fig. 17)**

INDEX No.	PART No.	PART NAME
1	100-297AAA	Mounting Strap
2	100-297AC	1/4" Hex. Nut
3	100-297AD	Guide Strap
4	100-297AE	Hood Clamp

INDEX No.	PART No.	PART NAME
5	100-297AF	Round Head Mach. Screw
6	100-297AG	Square Nut
7	100-297AH	Lockwasher